



C.O.N.I – F.I.S.I. – C.I.P. – U.S. ACLI  
IPCAS EUROPEAN CUP FINALS  
V MEMORIAL HANS ERLACHER  
[www.skieuropeancup.com](http://www.skieuropeancup.com)



# 2010 IPC ALPINE SKIING EUROPEAN CUP FINALS

*ARTA TERME – ZONCOLAN*

*UDINE – ITALY*

INVITATION

12- 14 February 2010

**Patronage:**

Regione Friuli Venezia Giulia, Provincia di Gorizia, Provincia di Udine, Comune di Arta Terme

Comune di Monfalcone, Comune di Tolmezzo, Comune di Ronchi dei Legionari, Comune di Ravascletto, CONI, FIS, CIP, US ACLI.



C.O.N.I – F.I.S.I. – C.I.P. – U.S. ACLI  
**IPCAS EUROPEAN CUP FINALS  
V MEMORIAL HANS ERLACHER**  
[www.skieuropeancup.com](http://www.skieuropeancup.com)



**ORGANIZATION:** Sci Club Due-US Acli Monfalcone-Ronchi (GO06)

**SUPPORT** Regione Autonoma Friuli-Venezia Giulia – Assessorato allo Sport-Assessorato al Turismo

**ORGANIZATION COMMITTEE:**

General Management:  
Chairman: Paolo Tavian  
Address: via dei Campi, 39-34077 Ronchi dei Leg.  
Mobil: +393296874038  
Email: [tavian@ardea.it](mailto:tavian@ardea.it)

Management Assistant: Fiorenzo Boscarol  
Address: via Rossini, 7- 34077 Ronchi dei Leg.  
Mobil: +393485942930  
Email: [0481777920@iol.it](mailto:0481777920@iol.it)

Chief of race: Adriano Orsi Nordio  
Address:  
Mobil: +393487828128  
Email: [orsi@dinoconti.com](mailto:orsi@dinoconti.com)

IPCAS – Head of Competition Europe / Race Director: Sylvana Mestre  
Mobil: +34610774420  
Email:

Race Entry Forms  
Us Acli Sci Club Due - via San Lorenzo 3 – 34077 Ronchi dei Legionari (GO) Italy  
Tel: +393296874038 Fax: +390481412694  
Email: [race.entries@skieuropeancup.com](mailto:race.entries@skieuropeancup.com)

Accommodation Forms  
Us Acli Sci Club Due - via San Lorenzo 3 – 34077 Ronchi dei Legionari (GO) Italy  
Telf: +393296874038 fax: +390481798005  
Email: [accomodation@skieuropeancup.com](mailto:accomodation@skieuropeancup.com)

IPCAS TD: By NSF By NSF-FIS

Referee: By TCM IPC

Referee assistant: By TCM IPC

Course setter: SC, GS, SL IPCAS STC

Super Combined Scores separately for SG points: YES

Rescue & Medical Service: Dr. Luciano Antalo Tolmezzo Hospital



C.O.N.I – F.I.S.I. – C.I.P. – U.S. ACLI  
**IPCAS EUROPEAN CUP FINALS  
V MEMORIAL HANS ERLACHER**  
[www.skieuropeancup.com](http://www.skieuropeancup.com)



Team Captain Meeting:	Race office	Town Hall-Arta
Race Office:		Town Hall-Arta
Location of the official notice board:		Town Hall-Arta
Ski area and slopes:		
SL Slope:	Zoncolan 1	Homologation nr 6880 / 10 / 02
GS Slope:	Zoncolan 1	Homologation nr 6880 / 10 / 02
SC Slope	Zoncolan 1	Homologation nr 5071 / 22 / 98
Rules:	IPCAS – Rule Book 2009/2010 valid until 1 October 2010	
Doping:	National Anti Doping Committee (NADO) according – IPC Agreement	
IPC Membership:	The Organizing Committee will only accept entry forms from NPCs in good standing with the IPC. Furthermore, only those entry forms submitted by the NPC President/Secretary General, or designated contact Person for IPC Alpine Skiing will be processed. For more information please contact <a href="mailto:ipcalpineskiing@paralympic.org">ipcalpineskiing@paralympic.org</a>	
Participant Insurance:	Each NPC must ensure that all the members of their delegation are appropriately insured, including coverage for travel, liability and accidents. All delegation members must have appropriate accident and health insurance in order to race in IPCAS races. For more information please contact <a href="mailto:ipcalpineskiing@paralympic.org">ipcalpineskiing@paralympic.org</a>	
Age Limit:	According to IPCAS Rule 304.7	
IPCAS Point Limit/Entry Limit	<b>IPCAS European Cups will have a maximum field size of 140 athletes (men and women together per event).</b> Please refer to <a href="http://www.ipc-alpineskiing.org/Qualification_Criteria/">http://www.ipc-alpineskiing.org/Qualification_Criteria/</a>	
Race Entry Fee:	€ 10 - per race	(Race-Entry without Lodging agreement by the LOC € 35 per day - Lift ticket included)
Lodging Entry Fee:	<b>€ 65 per day</b> (Half board and lift ticket included)	
Accommodation deadline forms	<b>22 January 2010</b>	FINAL ACCOMMODATION FORMS
Entry deadlines:	<b>29 January 2010</b>	FINAL ENTRY



C.O.N.I – F.I.S.I. – C.I.P. – U.S. ACLI  
IPCAS EUROPEAN CUP FINALS  
V MEMORIAL HANS ERLACHER

[www.skieuropeancup.com](http://www.skieuropeancup.com)



Payment Deadline **29 January 2010**

Payment of the total accommodation and the complete race fee  
The race entry fee is NOT REFUNDABLE

Forms download: <http://www.ipc-alpineskiing.org/Downloads/>

Bank Account info:

Payment deadline  
29/01/2010 to this  
account

Bank: ANTONVENETA filiale di  
MONFALCONE  
BBAN M 05040 64610 000001546349  
Account: 1546349  
IBAN: : IT 27 M 05040 64610  
000001546349  
BIC  
(SWIFT): ANTBIT2P38M

Liability: The organizer does not accept liability for any damage on persons or belongings.



C.O.N.I – F.I.S.I. – C.I.P. – U.S. ACLI  
IPCAS EUROPEAN CUP FINALS  
V MEMORIAL HANS ERLACHER  
[www.skieuropeancup.com](http://www.skieuropeancup.com)



## PROGRAMME

Thursday	13:00 -17:00	Welcome of teams at <b>Arta Terme</b> (Udine) Meeting at reception – brochures and ski pass distribution, communications, etc.	Arta Terme Thermal Centre
11.02.2010			Town Hall
	17:30	Team Captain's Meeting	
	08:00	Opening of ski-lift	Zoncolan / Ravalscletto
Friday	08:15 – 08:45	Course inspection SC- 1st run SG	
	09:00	SC 1st run (SG)	Zoncolan “uno” 5071 / 22 / 98
12.02.2010	11:15 – 11:45	Course inspection SC 2nd run SL	6880 / 10 / 02
	12:00	SC 2nd run (SL)	
	15:00	Prize giving ceremony SC	Sky area Par terre - Zoncolan
	18:30	Team Captain's Meeting	Town Hall
	08:00	Opening of ski-lift	Zoncolan / Ravalscletto
Saturday	08:15 – 08:45	Course inspection GS 1st run	
	09:00	GS 1st run	
13.02.2010	11:15 – 11:45	Course inspection GS 2nd run	Zoncolan “uno” 5071 / 22 / 98
	12:00	GS 2nd run	
	17:00	Team Captain's Meeting	Sky area Par terre - Zoncolan
	18:00	Prize giving ceremony GS	Town Hall- Tolmezzo
	08:00	Opening of ski-lift	Zoncolan / Ravalscletto
Sunday	08:15 – 08:45	Course inspection SL 1st run	
	09:00	SL 1st run	Zoncolan “uno” 5071 / 22 / 98
14.02.2010	11:15 – 11:45	Course inspection SL 2nd run	
	12:00	SL 2nd run	
	15:00	Prize giving ceremony SL	
	15:30	IPCAS European CUP FINALS OVERALL and NATIONS AWARD CEREMONY 2009-2010	Sky area Par terre - Zoncolan

**Changes to the programme can be made by the LOC/IPC**



C.O.N.I – F.I.S.I. – C.I.P. – U.S. ACLI  
IPCAS EUROPEAN CUP FINALS  
V MEMORIAL HANS ERLACHER  
[www.skieuropeancup.com](http://www.skieuropeancup.com)



## Maps and photo



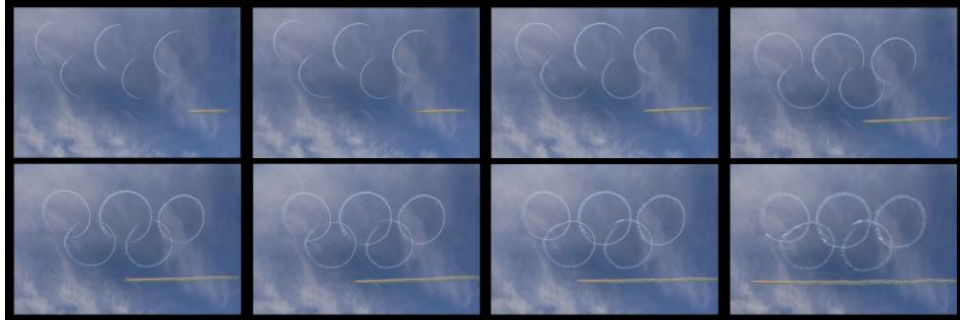


C.O.N.I – F.I.S.I. – C.I.P. – U.S. ACLI  
IPCAS EUROPEAN CUP FINALS  
V MEMORIAL HANS ERLACHER  
[www.skieuropeancup.com](http://www.skieuropeancup.com)





C.O.N.I – F.I.S.I. – C.I.P. – U.S. ACLI  
IPCAS EUROPEAN CUP FINALS  
V MEMORIAL HANS ERLACHER  
[www.skieuropeancup.com](http://www.skieuropeancup.com)



“FRECCIE TRICOLORI” FOR EUROPEAN CUP FINALE-ARTA TERME ZONCOLAN 2006